

MORA FISCAL YEAR 2022 AT A GLANCE

October 2021 - September 2022

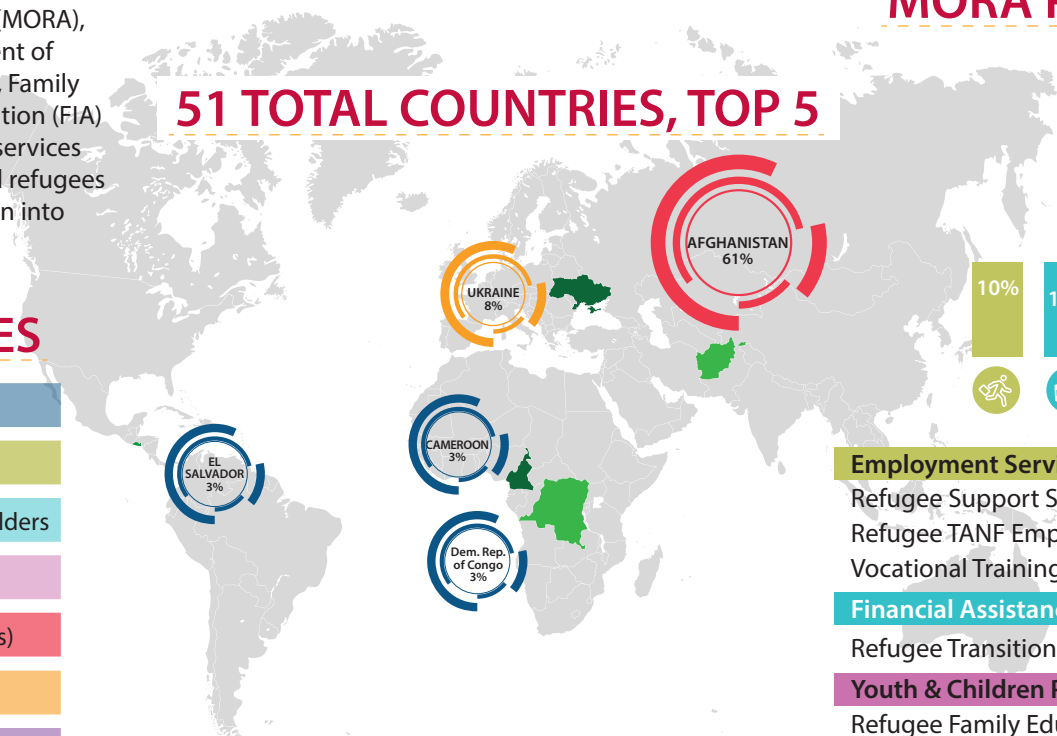


OVER **4,608**

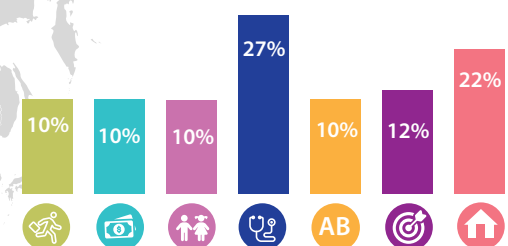
Total MORA Participants in FY22
An **390%** increase in new arrivals from FY21, a historic year in MD resettlement

The Maryland Office for Refugees and Asylees (MORA), through the Department of Human Services (DHS), Family Investment Administration (FIA) provides support and services to federally recognized refugees to ease their integration into American society.

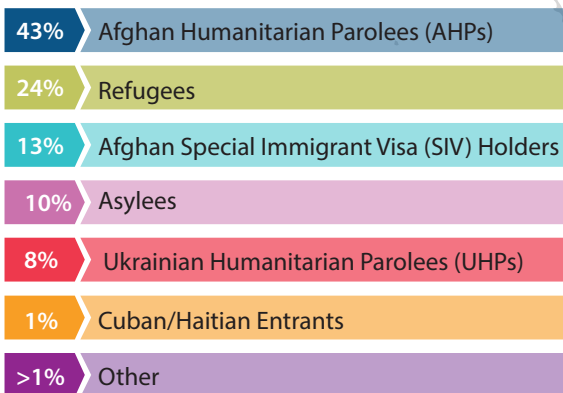
51 TOTAL COUNTRIES, TOP 5



MORA PROGRAMS FY22



IMMIGRATION STATUSES



| | |
|--|--------------|
| Employment Services | 1,125 |
| Refugee Support Services - Employment Services | |
| Refugee TANF Employment Program | |
| Vocational Training & Employment Services | |
| Financial Assistance | 1,090 |
| Refugee Transitional Cash Assistance | |
| Youth & Children Programming | 1,094 |
| Refugee Family Education | |
| Refugee School Impact | |
| Refugee Youth Mentoring | |
| Health Assistance | 3,001 |
| Refugee Medical Screenings | |
| Refugee Health Promotion | |
| Refugee Medical Assistance | |
| English for Speakers of Other Languages | 1,135 |
| English Language Training | |
| Targeted Case Management | 1,296 |
| Extended Case Management | |
| Services to Older Refugees | |
| Asylee Outreach Project | |
| Afghan Supplemental Assistance | 2,464 |
| Housing Assistance | |
| Legal assistance | |

AREAS/COUNTIES



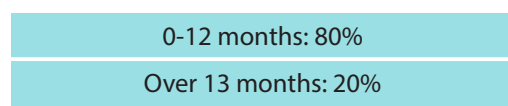
64%
Suburban Washington Area
(Primarily Prince George's County as well as Montgomery County)

31%
Baltimore Metropolitan Area
(Primarily Baltimore City as well as Baltimore, Anne Arundel, Carroll, Hartford, and Howard Counties)

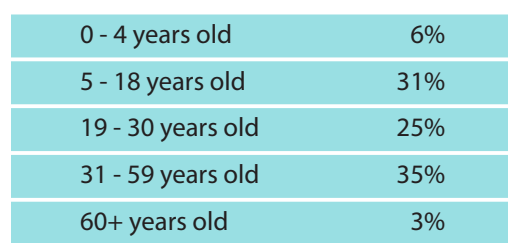
2%
Frederick County

2% **Other**
(Primarily Washington, Wicomico, Charles, Calvert, Cecil, Queen Anne's, Talbot, Allegany, and Worcester Counties)

TIME IN U.S.



AVERAGE AGE OF CLIENTS: 25



REFUGEE RESETTLEMENT FUNDING STREAMS



Bureau of Populations, Refugees, and Migration U.S. State Department



Directly to 9 National Resettlement Agencies (RAs)

In Maryland: 3 Resettlement Agencies



- ▶ Reception & Placement Program
- ▶ Matching Grant Program



- ▶ Preferred Communities Grant
- ▶ Afghan Placement Assistance (APA) Program *new in FY22

Serving Refugees, Special Immigrant Visa (SIV) Holders and Afghan Humanitarian Parolees (AHPs)



Office of Refugee Resettlement (ORR) Department of Health & Human Services

Through State Agencies



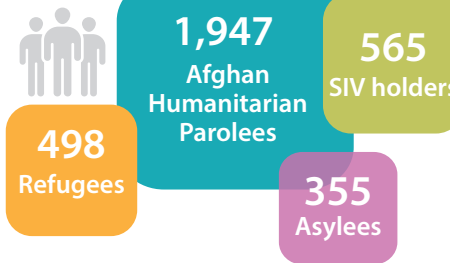
In Maryland: Maryland Office for Refugees & Asylees (MORA), Department of Human Services

- ▶ Temporary Cash Assistance and Medical Screening (CMA)
- ▶ Refugee Support Services (RSS)
 - Employability Services
 - Set-Aside Programs
 - Older Refugees (SOR)
 - Youth (RSIG, RYMP)
 - Refugee Health Promotion (RHP)
- ▶ Refugee TANF Coordination Grant

Serving Refugees, SIV Holders, Asylees, Victims of Trafficking (VOTs), Cuban/Haitian Entrants and Ukrainian Humanitarian Parolees (UHPs), Afghan Humanitarian Parolees (AHPs)

REFUGEE ARRIVALS IN MARYLAND

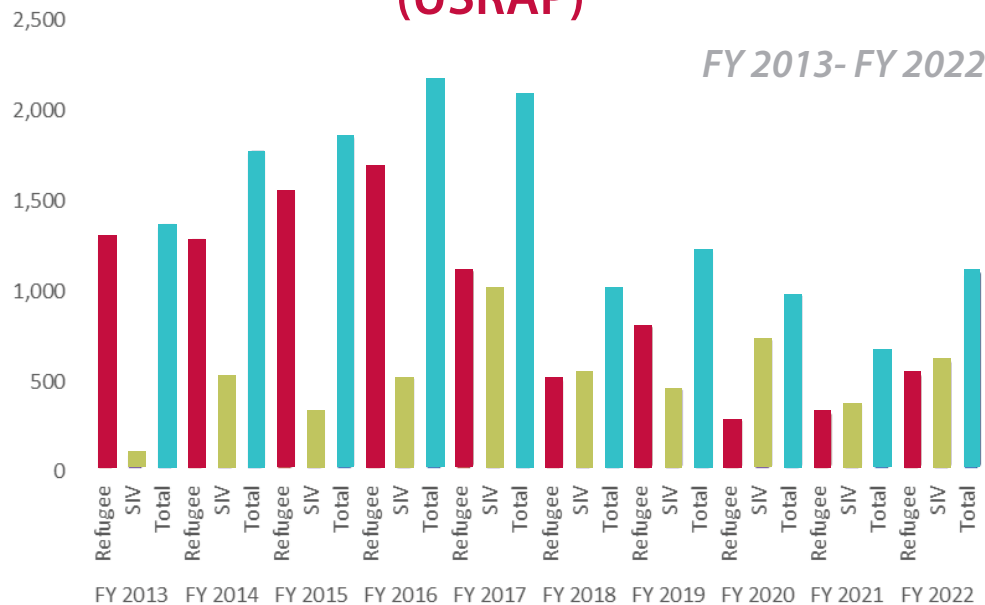
#6 largest state for Afghan resettlement through federal Operation Allies Welcome (OAW)



Maryland ranked #14 for refugee and SIV arrivals through U.S. Refugee Admissions Program (USRAP)

Over 3,010 new arrivals through U.S. Refugee Admissions Program, Operation Allies Welcome (new in FY22), and Uniting for Ukraine (new in FY22) - over 390% of FY21 arrivals

REFUGEES AND SIV HOLDERS RESETTLEMENT THROUGH U.S. REFUGEE ADMISSIONS PROGRAM (USRAP)



For more information, visit: www.dhs.maryland.gov/mora

