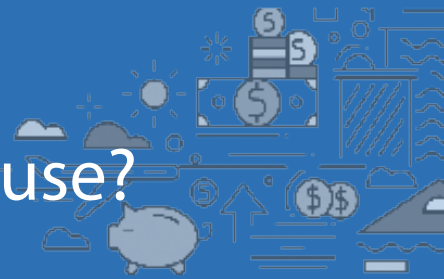


What is an Exemption and Good Cause?



What is an exemption?

You may be exempt from the work requirements for the following reasons. If you are exempt, you may volunteer to participate but will not be subject to sanction.

- A single parent caring for a child under age 1
- An adult needed to care for a disabled person in the home
- An adult working 30 or more hours per week
- An individual who is a victim of family violence
- For the first six months of benefit for a customer who has never previously received TCA

What is a good cause for not participating?

- Good Cause means you are trying or tried to comply with requirements but through no fault of your own, you were not able to comply. The following are examples of reasons for good cause:
- Temporary illness or incapacity
- Court ordered appearances or (temporary) incarceration
- Domestic violence
- A family crisis that threatens normal family functioning including:
- Experiencing homelessness
- Housing crisis (such as eviction, foreclosure, utility shut off notice)
- Breakdown in transportation
- A lack of supportive services identified by the customer and worker
- Breakdown in childcare arrangements or lack of childcare
- The failure of the local department to provide reasonable accommodations to an individual with a disability

What happens when I have good cause for not participating in an activity?

If you believe that you have a good cause, you must contact your case manager to explore and discuss resources available to support your family while you address any barriers. Your Local Department is there to support you and your family. Resources for common barriers have also been included on the back of this flyer.

What if I am exempt or have good cause but still want to participate?

If you choose to participate in a work activity when you are exempt, your TCA case will not be sanctioned if you are unable to continue to participate in that activity.

What is an Exemption and Good Cause?



What is a sanction?

A sanction is a temporary reduction applied to the TANF/TCA benefit until the customer is in compliance with child support and/or the work program requirements.

Resources

The [Constituent Services Office \(CSO\)](#) is a unique support and services office in the Office of the Secretary. CSO functions as the Department of Human Services' customer service center by providing information about programs and facilitating access to its services.

Not sure where to turn? Try this link.

[211 MD](#)

Application or active case for child care

[Child Care Scholarship](#)

Resources for customers with disabilities

ADA - [Job Accommodations Network](#)

DORS - [Division of Rehabilitation Services](#)

Reentry/Justice Involved Resources Employment and Job Readiness

[Maryland Re-Entry Initiative - Workforce Development & Adult Learning](#)

Youth Services

[Maryland Youth Workforce Programs and Services](#)

Veteran Resources

[Veteran Services - Workforce Development & Adult Learning](#)



For More Information Call:

TTY 1-800-332-6347

25 S. Charles St.

Baltimore, MD 21201

www.dhs.maryland.gov



@mdhumanservices



Apply for Benefits

Your benefits and services are a click away!

<https://mymdthink.maryland.gov>



DHS Customer Service , Contact Us

<https://dhs.maryland.gov/customer-service/>

